

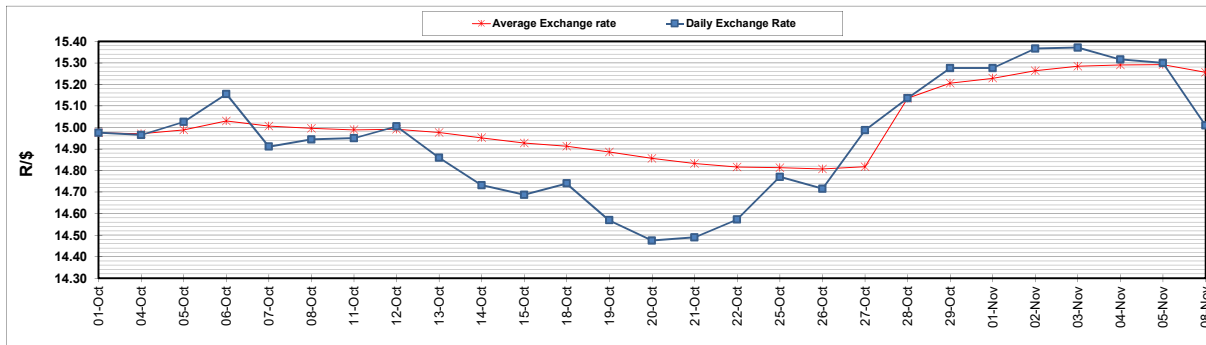
	PETROL 95 ULP	PETROL 93 ULP & LRP	DIESEL 0.05%	DIESEL 0.005%	ILL. PAR.
GAUTENG PUMP PRICE (SA c/l) AS FROM 03/11/2021	1,954.000	1,932.000	-	-	-
WHOLESALE PRICE (SA c/l) AS FROM 03/11/2021	-	-	1,719.980	1,723.380	1,125.488
SINGLE NATIONAL MAXIMUM RETAIL PRICE	-	-	-	-	1,433.000
BASIC FUEL PRICE - 08/11/2021 (SA c/l)	939.580	918.113	928.855	934.271	918.126
PRESS RELEASE CONTRIBUTION TO BFP 03/11/2021 - 08/11/2021 (SA c/l)	937.110	925.110	917.630	921.030	912.128
UNIT OVER/(UNDER) RECOVERY - 08/11/2021 (SA c/l)	(2.470)	6.997	(11.225)	(13.241)	(5.998)
AVERAGE BASIC FUEL PRICE 28/10/2021 - 08/11/2021	979.522	957.385	934.313	940.284	929.096
AVERAGE UNIT OVER/(UNDER) RECOVERY 28/10/2021 - 08/11/2021	(101.811)	(91.676)	(89.683)	(92.253)	(89.468)

### ANALYSIS MOVEMENT OF AVERAGE OVER/(UNDER) RECOVERY

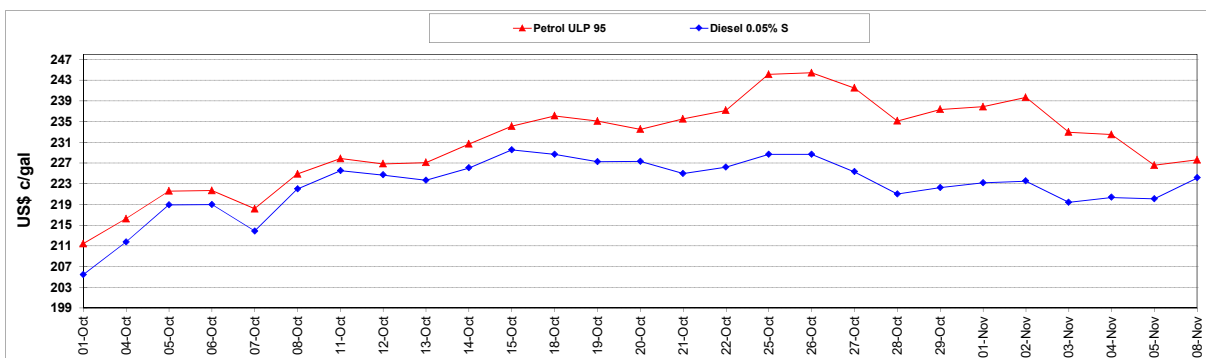
	PETROL 95	PETROL 93	DIESEL 0.05%	DIESEL 0.005%	ILL. PAR.
- MOVEMENT IN INTERNATIONAL PRODUCT PRICES	(73.664)	(64.163)	(62.834)	(65.234)	(62.769)
- MOVEMENT IN EXCHANGE RATE	(28.148)	(27.512)	(26.849)	(27.020)	(26.699)
AVERAGE UNIT OVER/(UNDER) RECOVERY 28/10/2021 - 08/11/2021	(101.811)	(91.676)	(89.683)	(92.253)	(89.468)

### R/\$ EXCHANGE RATE - (R/\$15.0090 - 08/11/2021)

#### EXCHANGE RATE USED IN BASIC FUEL PRICE



#### INTERNATIONAL PRODUCT PRICES OF BASKET USED IN BASIC FUEL PRICE



#### BASIC FUEL PRICE IN SA CENTS PER LITRE

